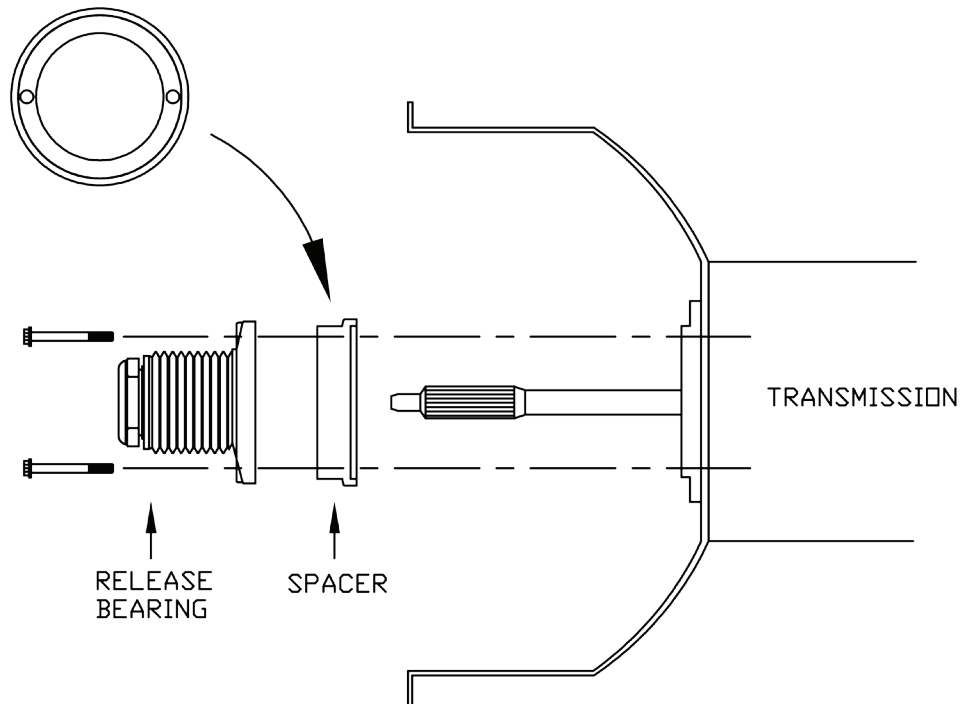


IMPORTANT

Release Bearing Shim Installation Instructions

When using the Original Equipment factory release bearing you **MUST** install the enclosed shim between the hydraulic slave / release bearing and transmission as shown:



BELLOUSING CUT-A-WAY

NOTE: Re-use the two Original Equipment Bearing / Slave bolts (torque to 8-10 ft/lbs) with the Bearing / Slave assembly and Centerforce spacer.

Your new clutch assembly requires only **ONE** spacer. Should your vehicle have any other type of aftermarket spacers or shims, please discard and use only the **ONE** included spacer from Centerforce.



"NOTE" Centerforce tip sheets are for general reference only. Please refer to your owners manual for vehicle specifications.

IMPORTANT